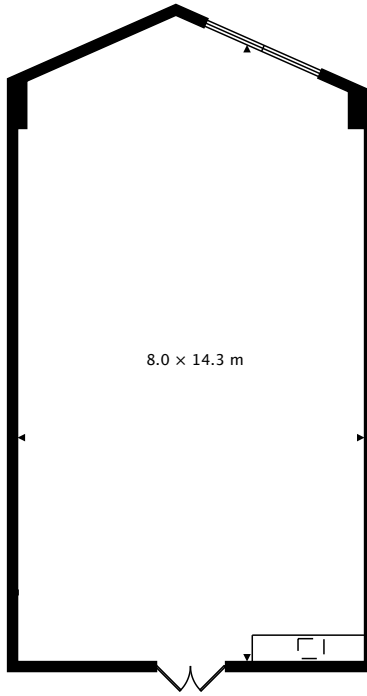
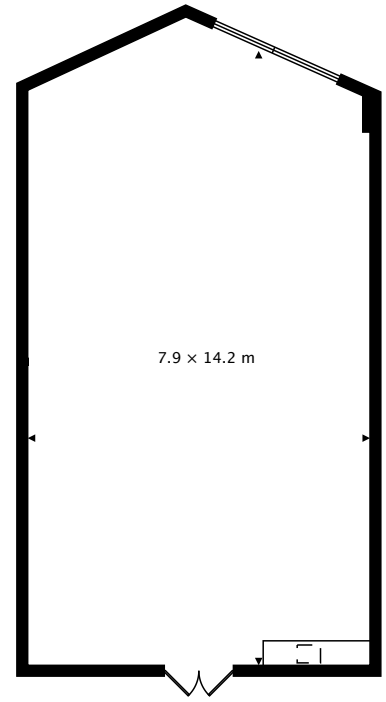


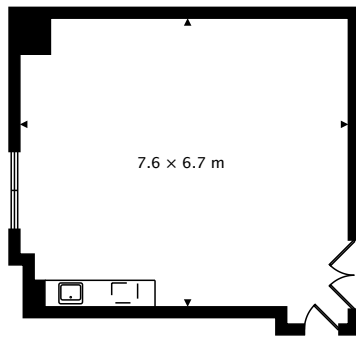
MEETING PLACE 1
125.7 m²



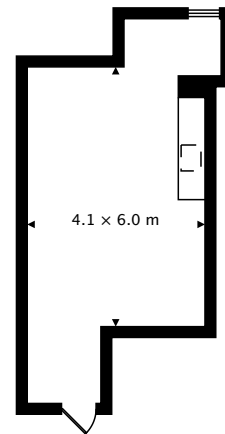
MEETING PLACE 2
123.1 m²



MEETING PLACE 3
122.8 m²



MEETING PLACE 4
58.6 m²

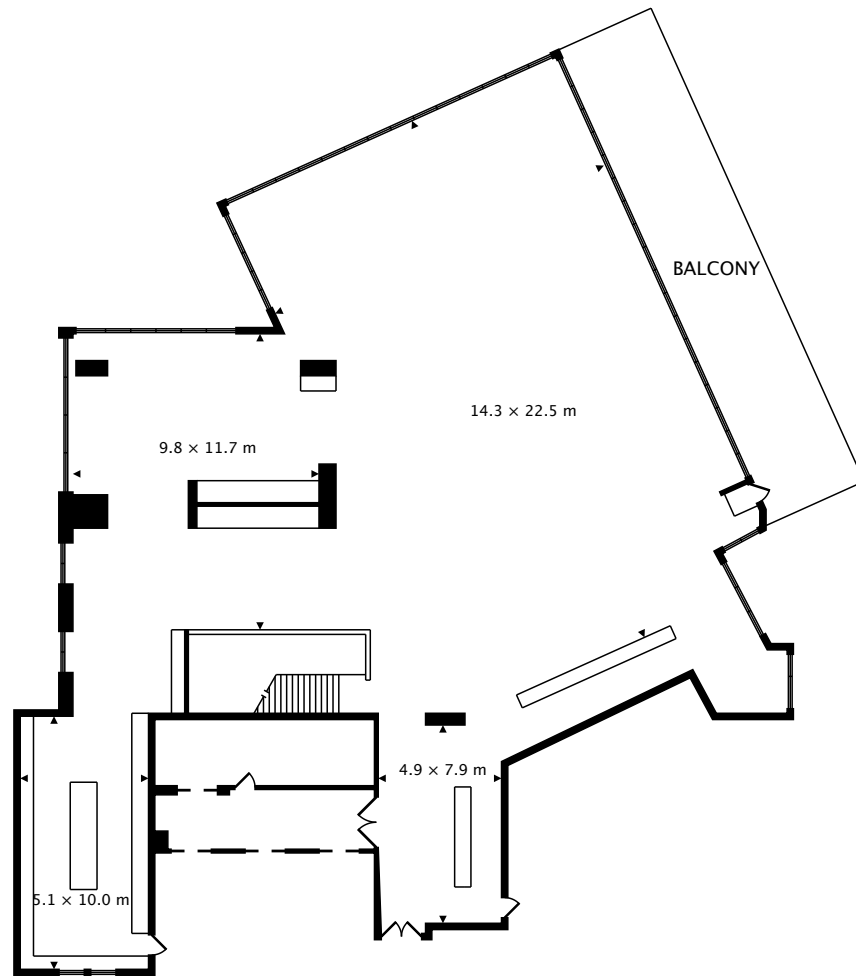


BOARDROOM 2
37.3 m²

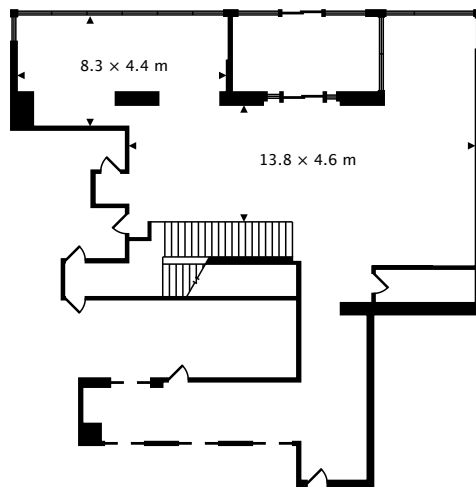
TOTAL
2341.8 m²



CAPTURED ON: 25 JAN 2017
DIMENSIONS, AREAS, LAYOUTS AND DETAILS ARE APPROXIMATE
AND SHOULD BE CONSIDERED ILLUSTRATIVE ONLY.



LOBBY SECOND
703.7 m²

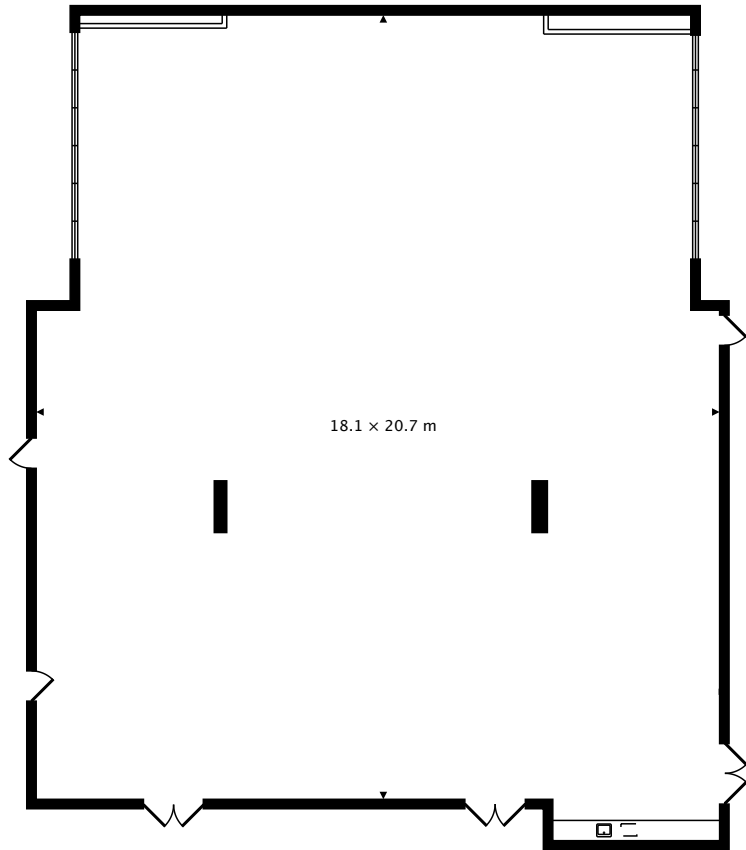


LOBBY MAIN
231.2 m²

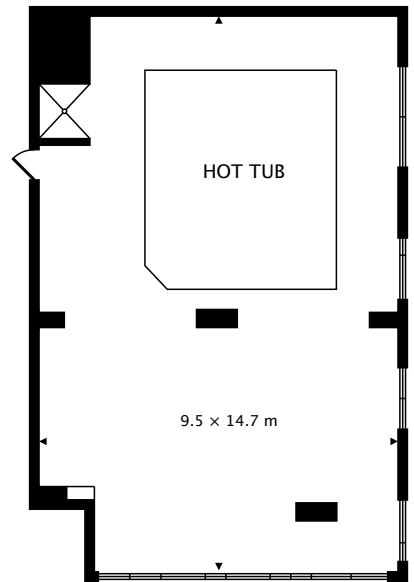
TOTAL
2341.8 m²



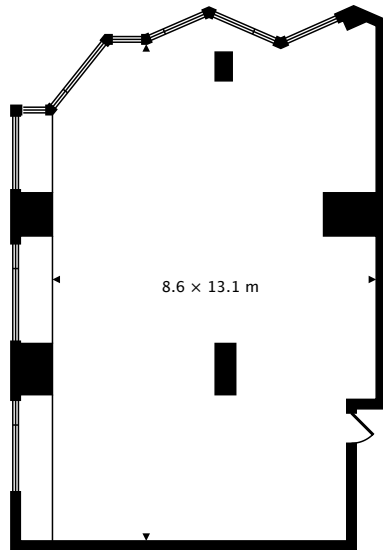
CAPTURED ON: 25 JAN 2017
DIMENSIONS, AREAS, LAYOUTS AND DETAILS ARE APPROXIMATE
AND SHOULD BE CONSIDERED ILLUSTRATIVE ONLY.



JASPER ROOM
385.3 m²



HOT TUB ROOM
149.2 m²

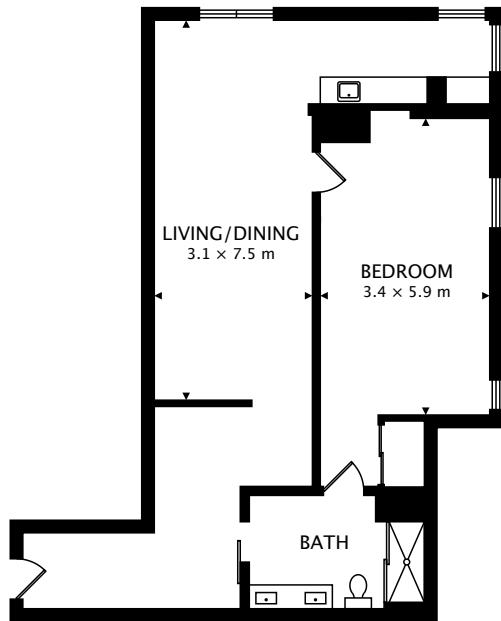


FITNESS ROOM
131.5 m²

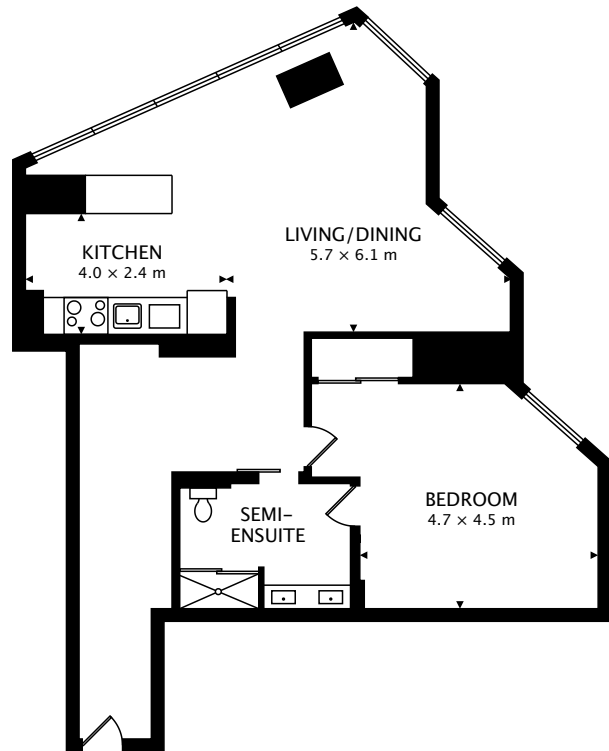
TOTAL
2341.8 m²



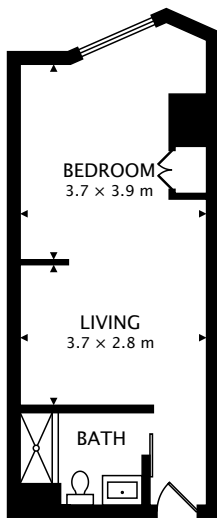
CAPTURED ON: 25 JAN 2017
DIMENSIONS, AREAS, LAYOUTS AND DETAILS ARE APPROXIMATE
AND SHOULD BE CONSIDERED ILLUSTRATIVE ONLY.



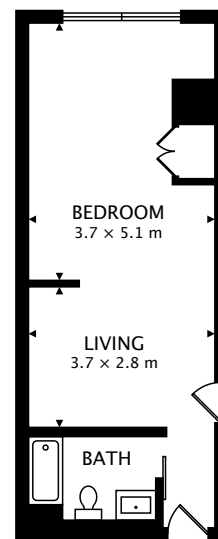
SUITE 401
84.1 m²



SUITE 402
107.5 m²



SUITE 404
40.3 m²



SUITE 405
41.5 m²

TOTAL
2341.8 m²



CAPTURED ON: 25 JAN 2017
DIMENSIONS, AREAS, LAYOUTS AND DETAILS ARE APPROXIMATE
AND SHOULD BE CONSIDERED ILLUSTRATIVE ONLY.