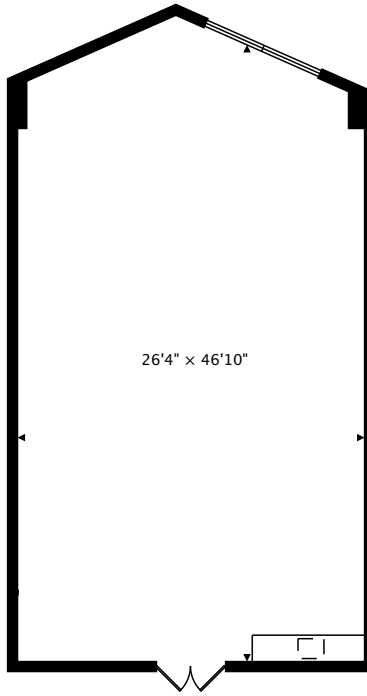
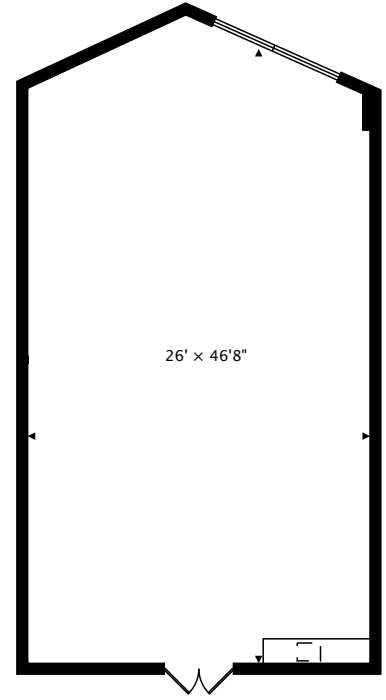


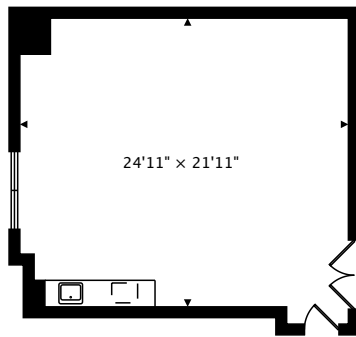
MEETING PLACE 1
1354 sq ft



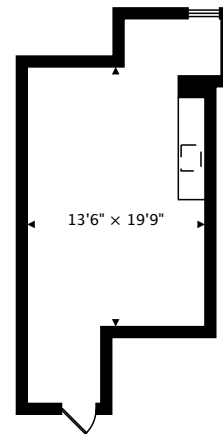
MEETING PLACE 2
1326 sq ft



MEETING PLACE 3
1322 sq ft



MEETING PLACE 4
631 sq ft



BOARDROOM 2
402 sq ft

TOTAL
25207 sq ft



by 3D Scan Experts
real.vision | www.3dscanexperts.com



CAPTURED ON: 25 JAN 2017

DIMENSIONS, AREAS, LAYOUTS AND DETAILS ARE APPROXIMATE
AND SHOULD BE CONSIDERED ILLUSTRATIVE ONLY

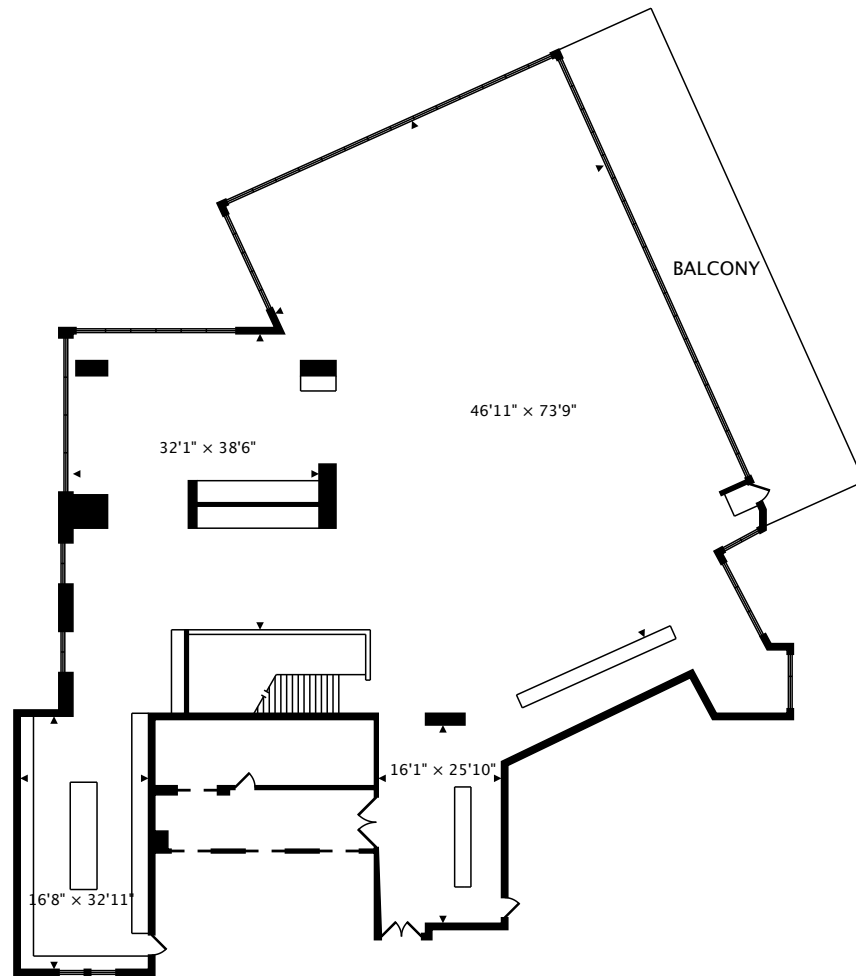
Hyatt Place Edmonton Downtown

Edmonton Downtown

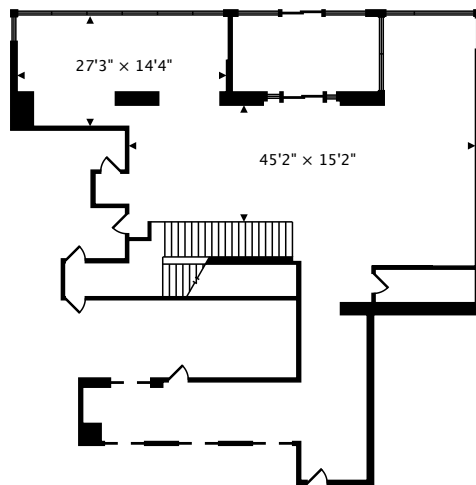
Hyatt Place

D: 587-525-1234

www.edmontondowntown.place.hyatt.com/en/hotel/home.html



LOBBY SECOND
7574 sq ft



LOBBY MAIN
2488 sq ft

TOTAL
25207 sq ft



by 3D Scan Experts
real.vision | www.3dscanexperts.com



CAPTURED ON: 25 JAN 2017

DIMENSIONS, AREAS, LAYOUTS AND DETAILS ARE APPROXIMATE
AND SHOULD BE CONSIDERED ILLUSTRATIVE ONLY

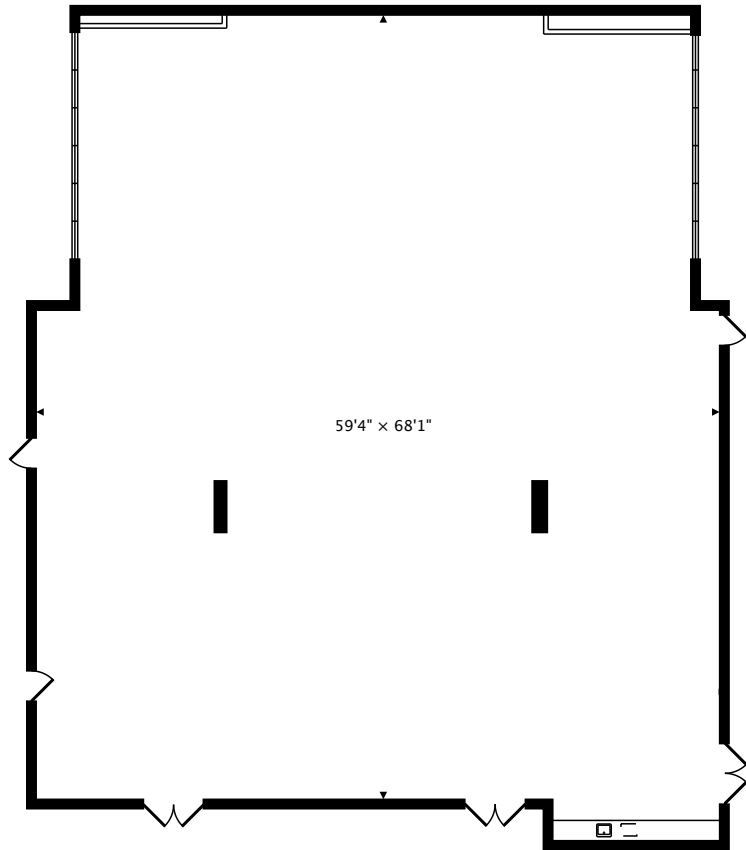
Hyatt Place Edmonton Downtown

Edmonton Downtown

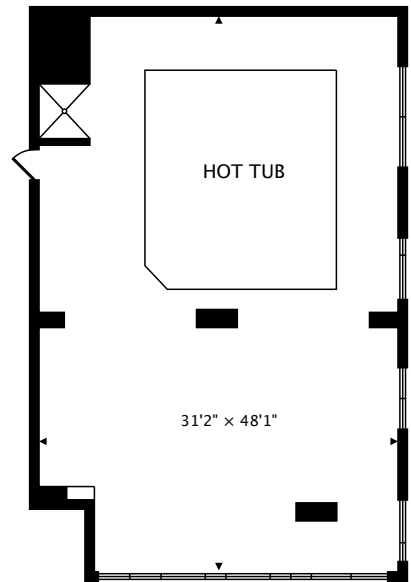
Hyatt Place

D: 587-525-1234

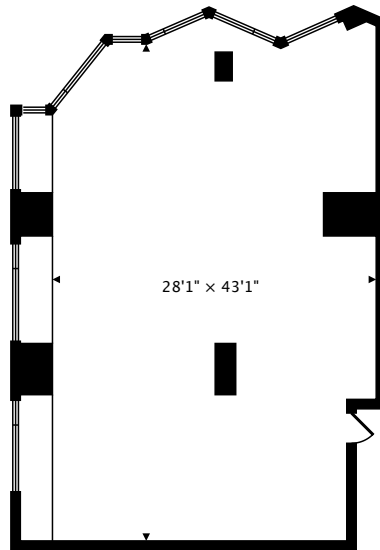
www.edmontondowntown.place.hyatt.com/en/hotel/home.html



JASPER ROOM
4147 sq ft



HOT TUB ROOM
1606 sq ft



FITNESS ROOM
1415 sq ft

TOTAL
25207 sq ft



by 3D Scan Experts
real.vision | www.3dscanexperts.com



CAPTURED ON: 25 JAN 2017
DIMENSIONS, AREAS, LAYOUTS AND DETAILS ARE APPROXIMATE
AND SHOULD BE CONSIDERED ILLUSTRATIVE ONLY

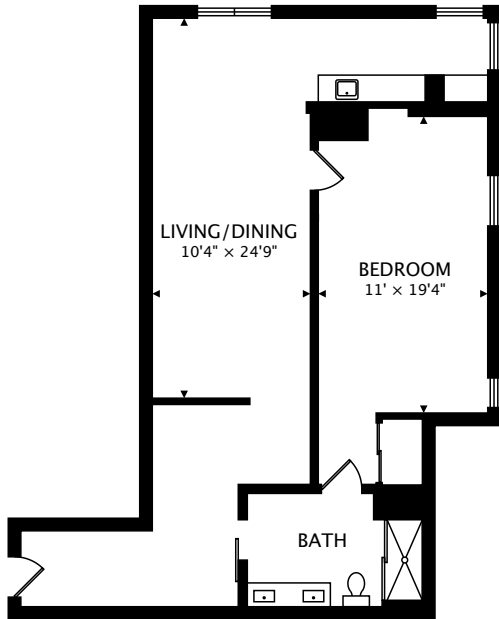
Hyatt Place Edmonton Downtown

Edmonton Downtown

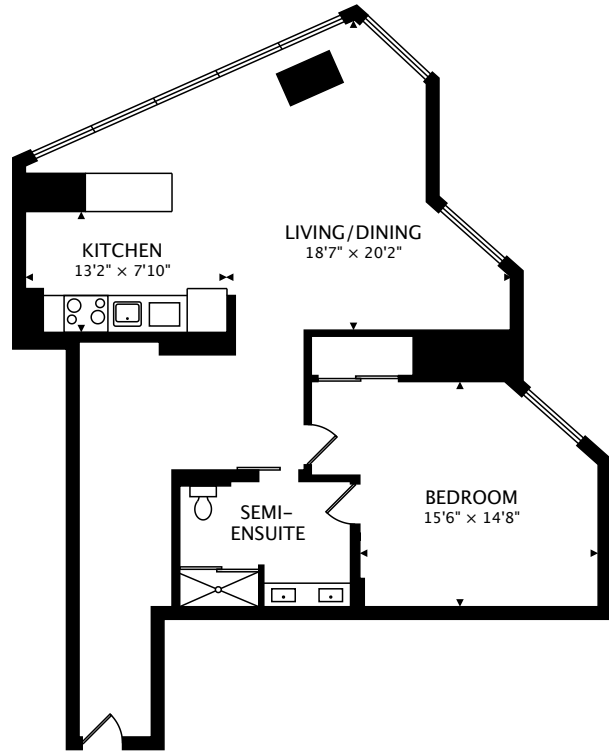
Hyatt Place

D: 587-525-1234

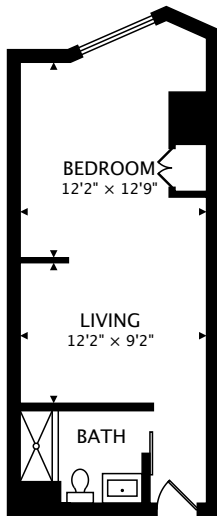
www.edmontondowntown.place.hyatt.com/en/hotel/home.html



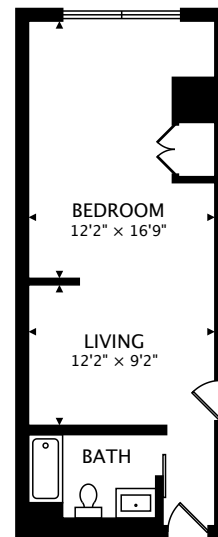
SUITE 401
905 sq ft



SUITE 402
1157 sq ft



SUITE 404
434 sq ft



SUITE 405
447 sq ft

TOTAL
25207 sq ft



by 3D Scan Experts
real.vision | www.3dscanexperts.com



CAPTURED ON: 25 JAN 2017
DIMENSIONS, AREAS, LAYOUTS AND DETAILS ARE APPROXIMATE
AND SHOULD BE CONSIDERED ILLUSTRATIVE.
www.edmontondowntown.place.hyatt.com/en/hotel/home.html

Hyatt Place Edmonton Downtown

Edmonton Downtown

Hyatt Place

D: 587-525-1234